

# The Lafayette 3312 SF

**4 or 5  
Bedrooms  
Standard  
Front Porch  
3 Car garage  
Unfinished  
above the  
garage**

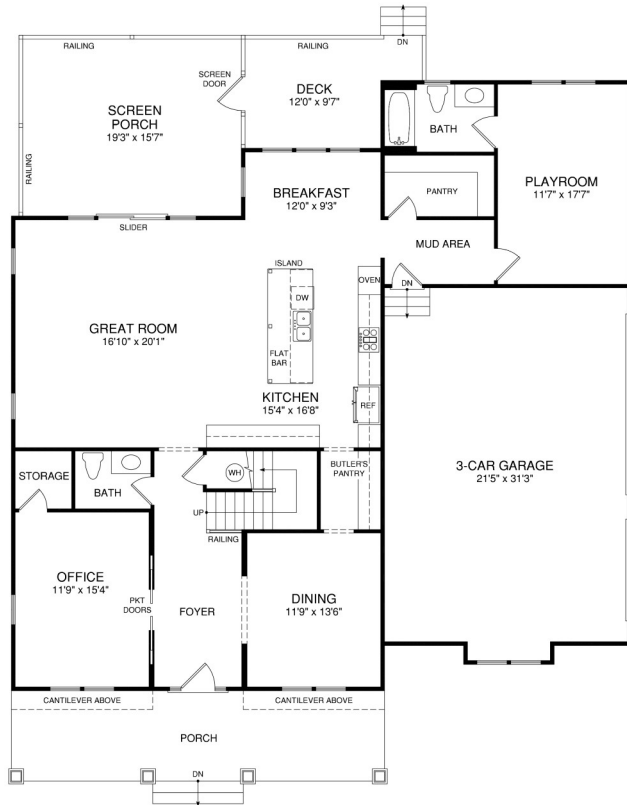


Brick Front

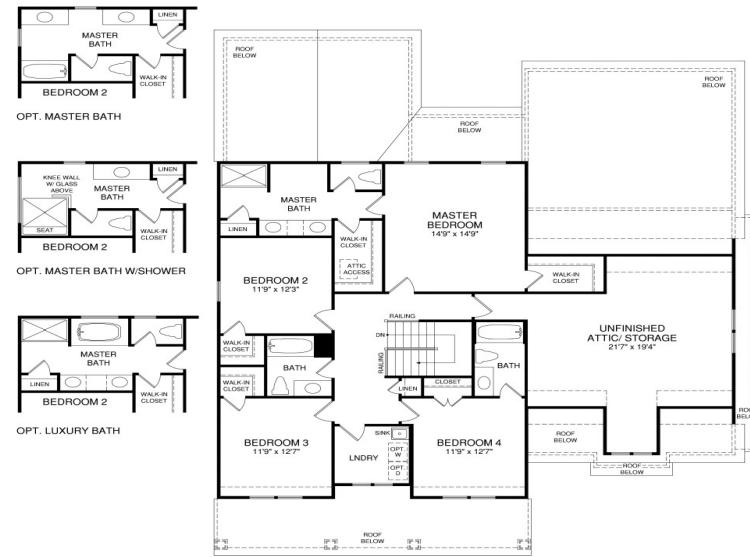


Stone Front

# The Lafayette 3312 SF



FIRST FLOOR PLAN



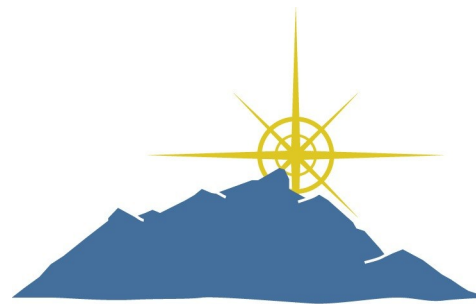
SECOND FLOOR PLAN

[www.bethelbuilders-va.com](http://www.bethelbuilders-va.com)

540-748-8810

[info@bethelbuilders-va.com](mailto:info@bethelbuilders-va.com)

These floor plans and renderings are for illustrative purposes only and may vary from actual plans. Room sizes and square footages are approximate. This information is deemed reliable but is not guaranteed and is subject to change without notice. Web site, renderings and photos may contain optional features for exhibition purposes only and are not contained in the purchase price unless otherwise expressly provided for. Minor floor plan changes and dimension change per local code. Plans Copyrighted 2012 by Bethel Builders, LLC



**BETHEL  
BUILDERS**

BUILT ROCK SOLID

BUILT FOR LIFE