

The Shenandoah 3124 SF

**4 Bedroom
3 ½ Bath
2 Car Garage
Standard
Front Porch
Unfinished
Storage
above Garage**

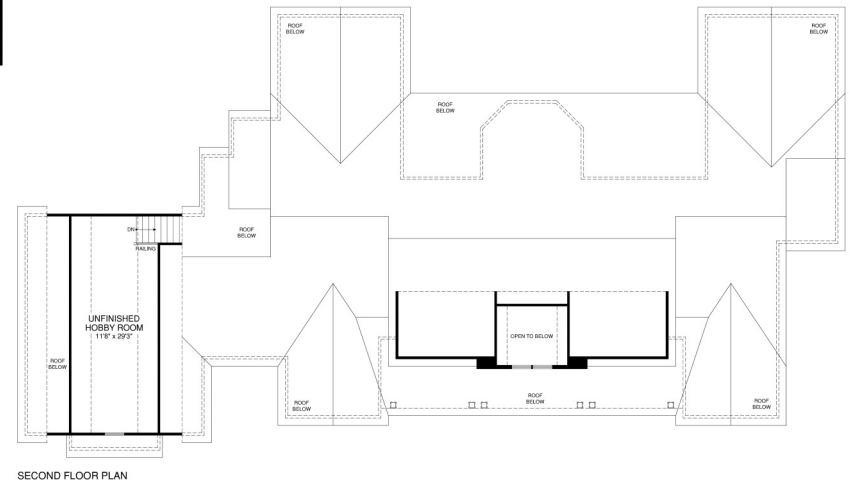
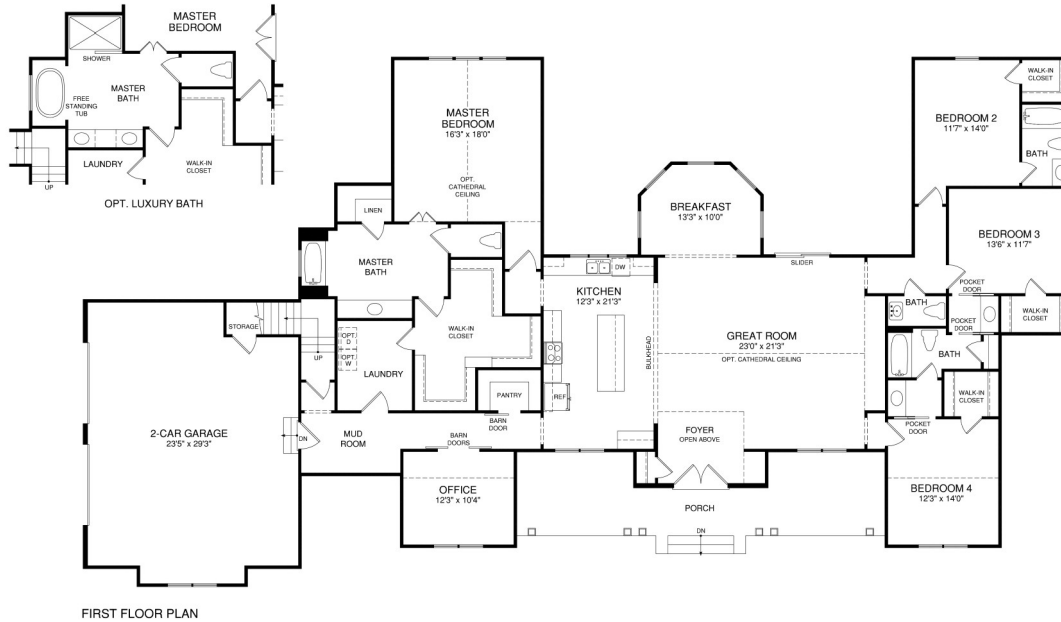


Partial Stone Front &
Board and batten siding



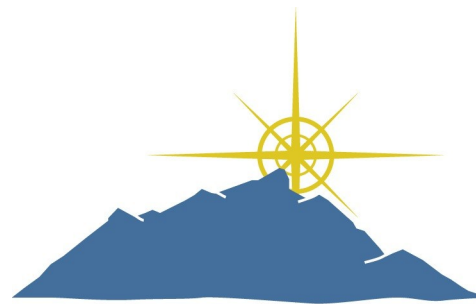
Brick Front

The Shenandoah 3124 SF



www.bethelbuilders-va.com
540-748-8810
info@bethelbuilders-va.com

These floor plans and renderings are for illustrative purposes only and may vary from actual plans. Room sizes and square footages are approximate. This information is deemed reliable but is not guaranteed and is subject to change without notice. Web site, renderings and photos may contain optional features for exhibition purposes only and are not contained in the purchase price unless otherwise expressly provided for. Minor floor plan changes and dimension change per local code. Plans Copyrighted 2012 by Bethel Builders, LLC



BUILT ROCK SOLID

**BETHEL
BUILDERS**

BUILT FOR LIFE