

The Fontaine 1827 SF

1 Level

**3 or 4
Bedrooms,
2 Baths.
Standard
2 Car Garage
and concrete
stoop.**



Partial Stone Front

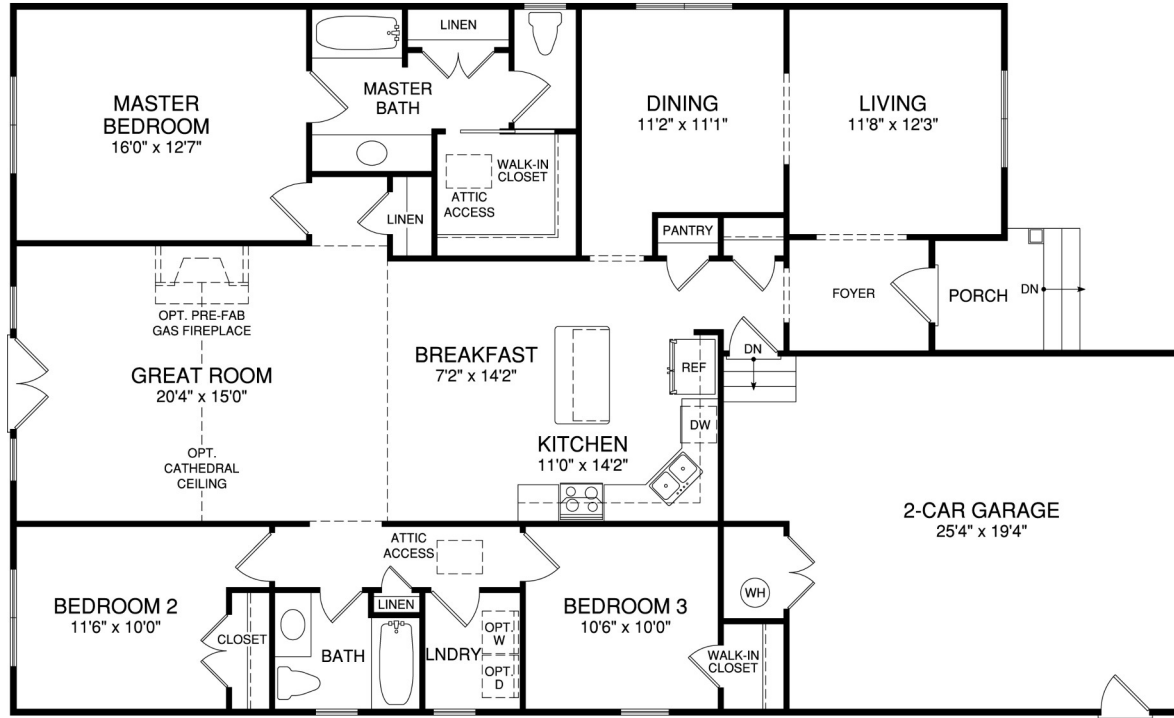


1/3 Stone

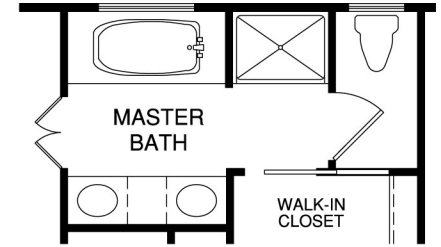


Brick Front

The Fontaine



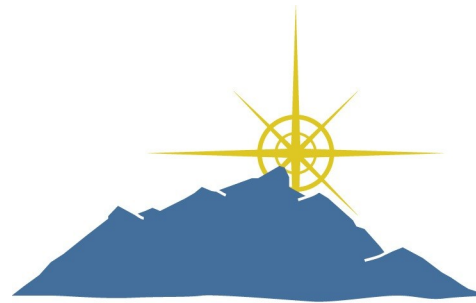
FIRST FLOOR PLAN



OPT. LUXURY BATH

www.bethelbuilders-va.com
 540-748-8810
 info@bethelbuilders-va.com

These floor plans and renderings are for illustrative purposes only and may vary from actual plans. Room sizes and square footage's are approximate. This information is deemed reliable but is not guaranteed and is subject to change without notice. Web site, renderings and photos may contain optional features for exhibition purposes only and are not contained in the purchase price unless otherwise expressly provided for. Minor floor plan changes and dimension change per local code. Plans Copyrighted 2012 by Bethel Builders, LLC



**BETHEL
 BUILDERS**

BUILT ROCK SOLID BUILT FOR LIFE