

The Cold Springs 1508 SF

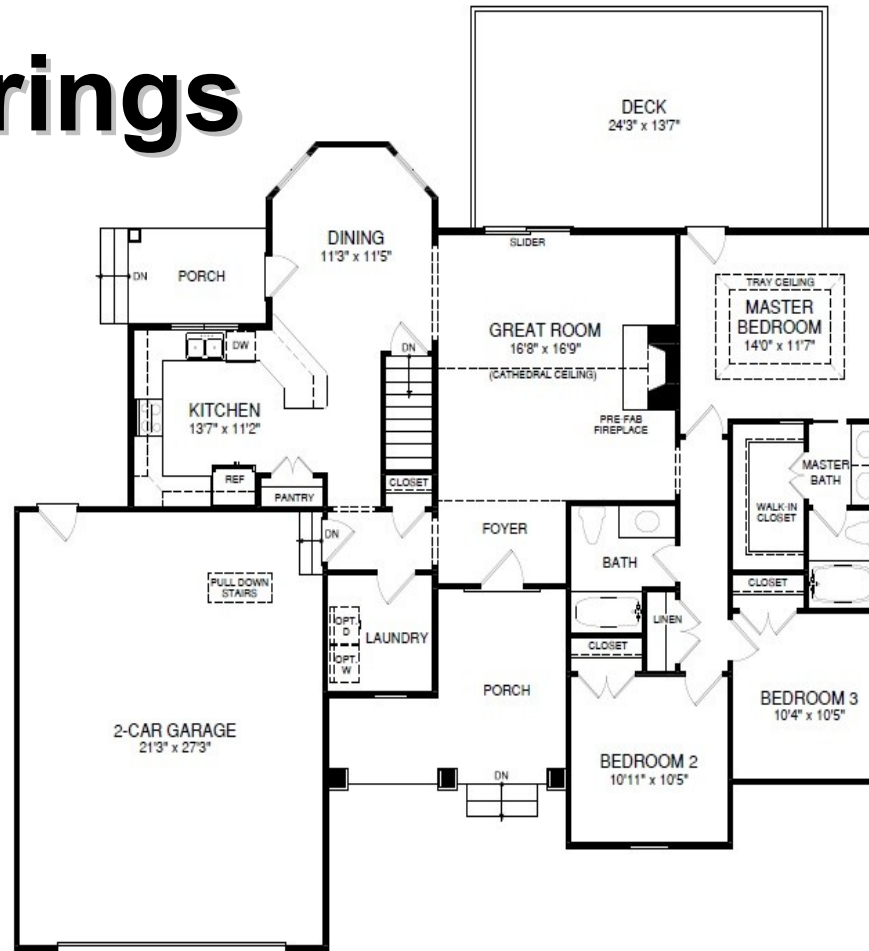


Showing optional stone
foundation

3 Bedrooms & 2 Baths. Standard 2 Car Garage
Standard Front Porch

The Cold Springs

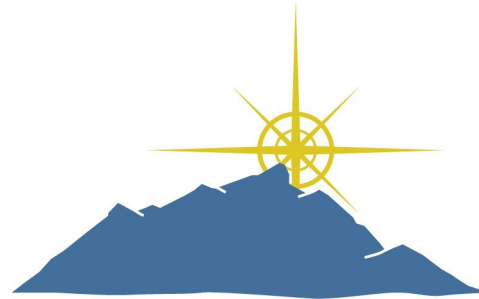
1508 SF



Deck, cathedral ceiling, fireplace and tray ceiling are optional

Floor Plan

www.bethelbuilders-va.com
 540-748-8810
info@bethelbuilders-va.com



BETHEL BUILDERS

BUILT ROCK SOLID BUILT FOR LIFE

These floor plans and renderings are for illustrative purposes only and may vary from actual plans. Room sizes and square footages are approximate. This information is deemed reliable but is not guaranteed and is subject to change without notice. Web site, renderings and photos may contain optional features for exhibition purposes only and are not contained in the purchase price unless otherwise expressly provided for. Minor floor plan changes and dimension change per local code. Plans Copyrighted 2012 by Bethel Builders, LLC